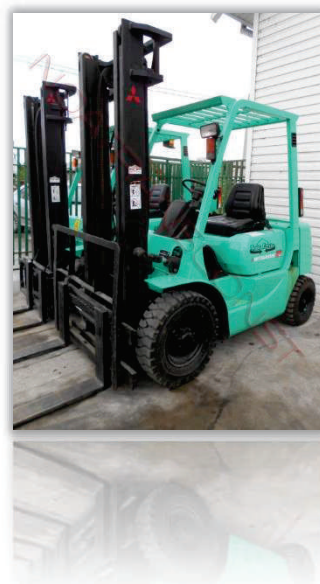


Motostivuator (forklift) Mitsubishi FD20 – oferit de [noatransconst.com](http://noatransconst.com) si [stivuatorbz.ro](http://stivuatorbz.ro)  
as offered by [noatransconst.com](http://noatransconst.com) and [stivuatorbz.ro](http://stivuatorbz.ro)

An de fabricatie (Year of manufacture): 2003  
Sarcina de ridicare (Lifting capacity): 2.5t  
Inaltime de ridicare (Lifting height): 3.80m  
Cauciucuri pline (Filled tires)  
Pret (Price): 7200 € (euro)



#### INFORMATII GENERALE (GENERAL INFO)

Tip combustibil (Fuel type)	Petrol / gasoline
Tip furca (Mast type) (standard)	2 stage / High visibility
Sarcina maxima (Capacity A)	2000 kg (4,409.25 lb)
Punct centru greutate furci (Load centre A)	500 mm (19.69 in)

#### SPECIFICATII PERFORMANTA (PERFORMANCE SPECIFICATIONS)

Viteza de ridicare (Lift speed, with load)	510 mm / sec. (20.08 in/sec)
Viteza de inaintare cu incarcatura (Travel speed forward, with load)	19 kph (11.81 mph)
Viteza in marsarier cu incarcatura (Travel speed reverse, with load)	19 kph (11.81 mph)

#### SPECIFICATII PUTERE (POWER SPECIFICATIONS)

Producator motor (Engine, make)	Mitsubishi
Model motor (Engine, model)	4G63
Putere motor (Rated power)	42 CP (HP)
Viteza rotatie motor (Engine RPM)	2400 RPM
Tip transmisie (Transmission, type)	Manual Powershift also available
Viteze inainte (Gears forward)	2
Viteze in marsalier (Gears reverse)	2

#### DIMENSIUNI SI GREUTATE (DIMENSIONS AND WEIGHT)

Inaltime maxima de ridicare (Max. lift height)	3000 mm (118.11 in)
Distanta ridicare suporturi furca fara inaltare mast (Free lift)	100 mm (3.94 in)
Inaltime fara furca (Lowered height)	2015 mm (79.33 in)
Lungime motostivuator (Machine length)	3380 mm (133.07 in)
Latime motostivuator (Machine width)	1150 mm (45.28 in)
Distanta roti (Machine wheel base)	1600 mm (62.99 in)
Raza de cotitura (Outside turning radius)	2185 mm (86.02 in)
Greutate masina fara incarcatura (Machine weight (no load))	3230 kg (7,120.93 lb)
Greutate masina cu incarcatura (Gross weight (with load))	5230 kg (11,530.18 lb)